

COMPANY
PROFILE

DCSEL



Derive Communications
Systems & Engineering
Limited



2025

CONTENT

About Us	03
Corporate Statements	05
Our Services	07
Clientele	24
Financial Capacity	26
Organizational Structure	28
Manner of Operation	31
Partners and Suppliers	33
Project References	36
Contact Us	43



About Us

Derive Communications Systems & Engineering Limited is a specialist Extra-Low Voltage Engineering Company incorporated in Nigeria. Our passion and focus are geared towards delivering satisfaction to our clients in Electronic Security Solutions, Fire Safety/Protection Systems, Low-Voltage and Communications Solutions as well as Information Technology. In over a decade of our corporate existence, we have been involved in several projects some of which are listed herein in this profile.

Our field and service engineers are skilled, trained, energetic and resilient. We are proud partner and distributor with best World Brands in the industries like Schneider Electric, Honeywell, HIKVISION, UTEPO, DAHUA, DAOSAFE, ZKTECO, SHENZHEN ZOAN GAOKE, TYCO Security & Tyco Fire, now part of JOHNSON CONTROLS (C.CURE, CEM Systems, Sur-Gard, Software House, DSC, Kantech, American Dynamics, Bentel Security Inc. Italy, FIRECLASS UK, etc), Paxton, D-Link, MikroTik, Ubiquiti, Cisco Inc., Alvarion, Bosch, Guest-Tek, Hoist, Crestron, Biamp, among others.

Our prime advantages include Professionalism, Timeliness, Price Competitiveness, Scalability of Solutions Provided, Integrated Solution Platforms, Building Management Systems, among others, thereby offering reliability and responsiveness in service towards complementing your aesthetically finished construction works.



Corporate Statements



OUR VISION

To Offer Technological Solutions
that Meet Tomorrow's Needs.



OUR MISSION

Never Compromising on
Engineering Standards,
Professionalism and Ethics;
Delivering Unexpected
Satisfaction Always.



CORE VALUES

		
Deligence	Excellence	Result
		
Innovation	Value	Efficiency



Our Services



DESIGN

Engineering design is the process of devising a system, component, or process to meet desired needs. It is a decision-making process (often iterative), in which the basic science and mathematics and engineering sciences are applied to convert resources optimally to meet a stated objective. Our qualified team ensures the design is up to standard and at affordable cost.



INSTALL

Project Deployments are done in accordance to the industry best practice. Our installation team and commissioning engineers are second to none.



INTEGRATE

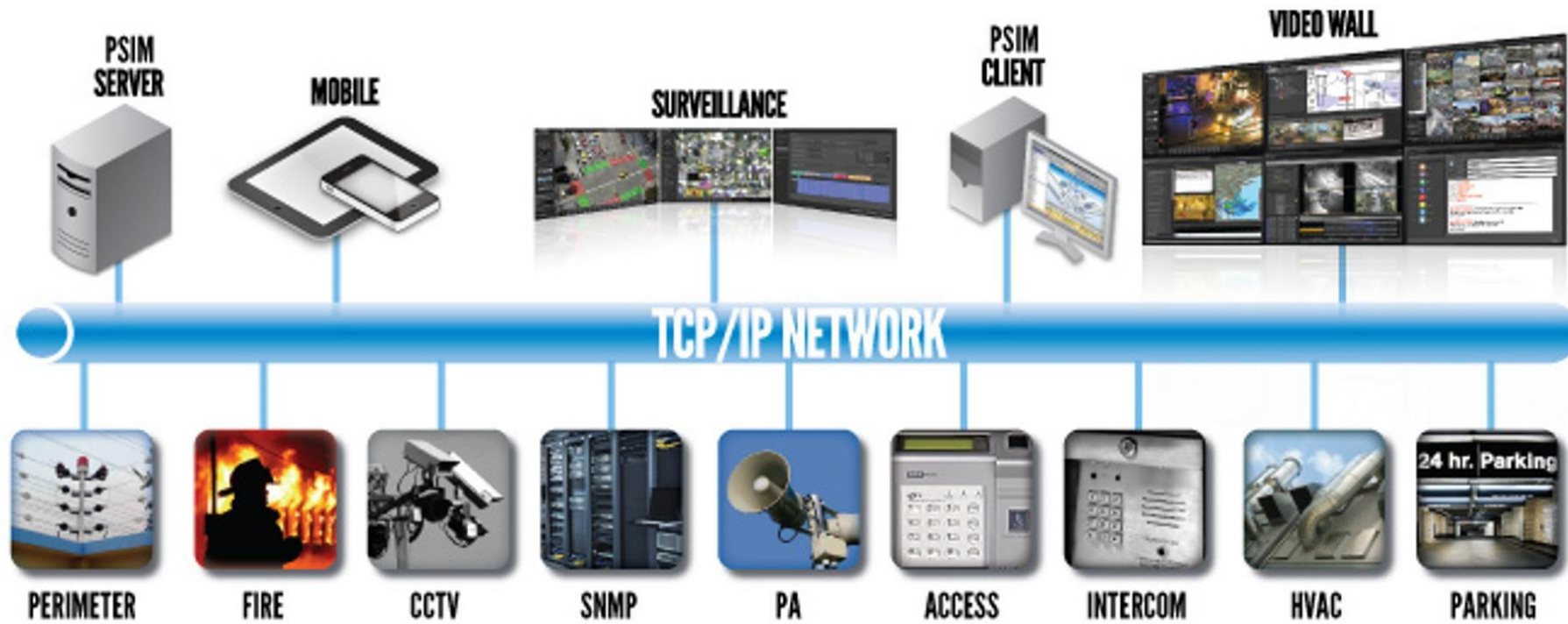
By Integration we refer to the ability of different security and safety systems to handshake and be managed on a common software platform thereby allowing prompt response to security and safety incidents. The standard features of an integrated software platform include Unified Platform, Structured Operation, Reports, Security & Stability, Scalability, and Extensibility



SUPPLY

Supply for the projects is done in real time using the fastest freight forwarder across the globe depending on the products origin.

System Integration



Renewable Energy and Designs

Renewable Energy and Designs



Sorotec REVO HM series
On&Off Hybrid Grid Solar
Inverter 1.5KVA - 6KVA Solar
Inverter
(Up to 4 and 6 Parallel
Configuration)



Wall Mounted 51.2V 50Ah -
200Ah LiFePO4 Lithium Iron
Battery
(Up to 4 and 6 Parallel
Configuration)



ATESS PCS 172Kwh -
215Kwh Battery
(Up to 4 Parallel
Configuration Possible)



YYCDPO I-5500-48
Hybrid Solar Power Inverter
(High PV Voltage)
3kw - 6kw
(Up to 4 parallel
Configuration)



ATESS Inverter 100KVA -
1000KVA
(Scalable Configuration)



40FT BESS Container

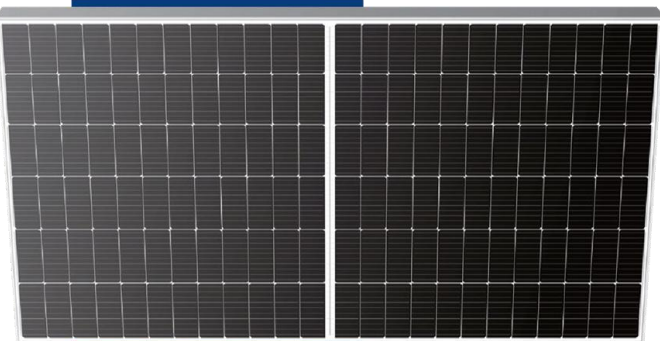


ATESS Transformer 630kW
400V Output
(Parallel Configuration)

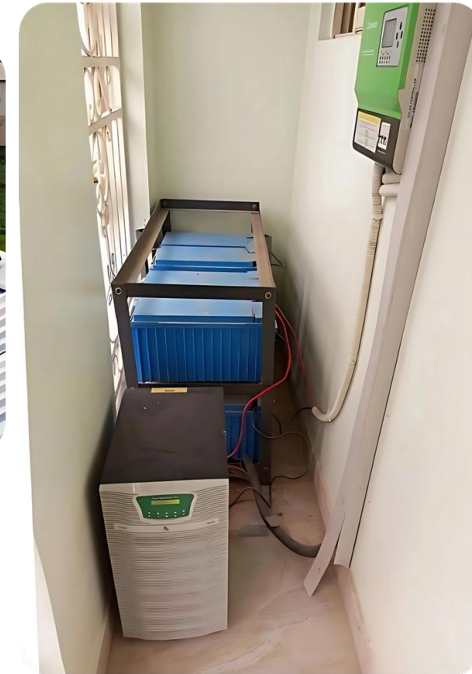
Renewable Energy and Designs



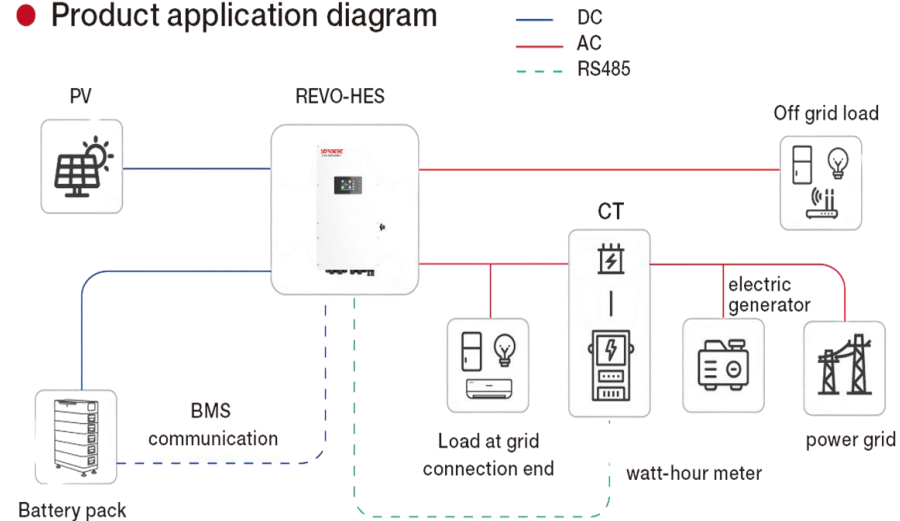
SOLAR PANELS



Renewable Energy and Designs



● Product application diagram



Renewable Energy Solar and Inverters

Mounting Racks & Electrical equipments			
Components	Photo	Components	Photo
① Rail 4400mm		⑧ PV Combiner Box including 15A PV fuse, lightening protection,	
② L feet		⑨ MC4 Connectors	
③ Rail Splice		⑩ 100m each red and black 4MM2 PV Cables	
④ Mid Clamp		⑪ Cable Tools	
⑤ End Clamp 40mm		⑫ T-bolt M8*20	
⑥ Tapping Screw		⑬ Conductive Plate	
⑦ Grounding Lug			

Mounting Racks & Electrical Equipments



CNC PV Series Photovoltaic DC MCB

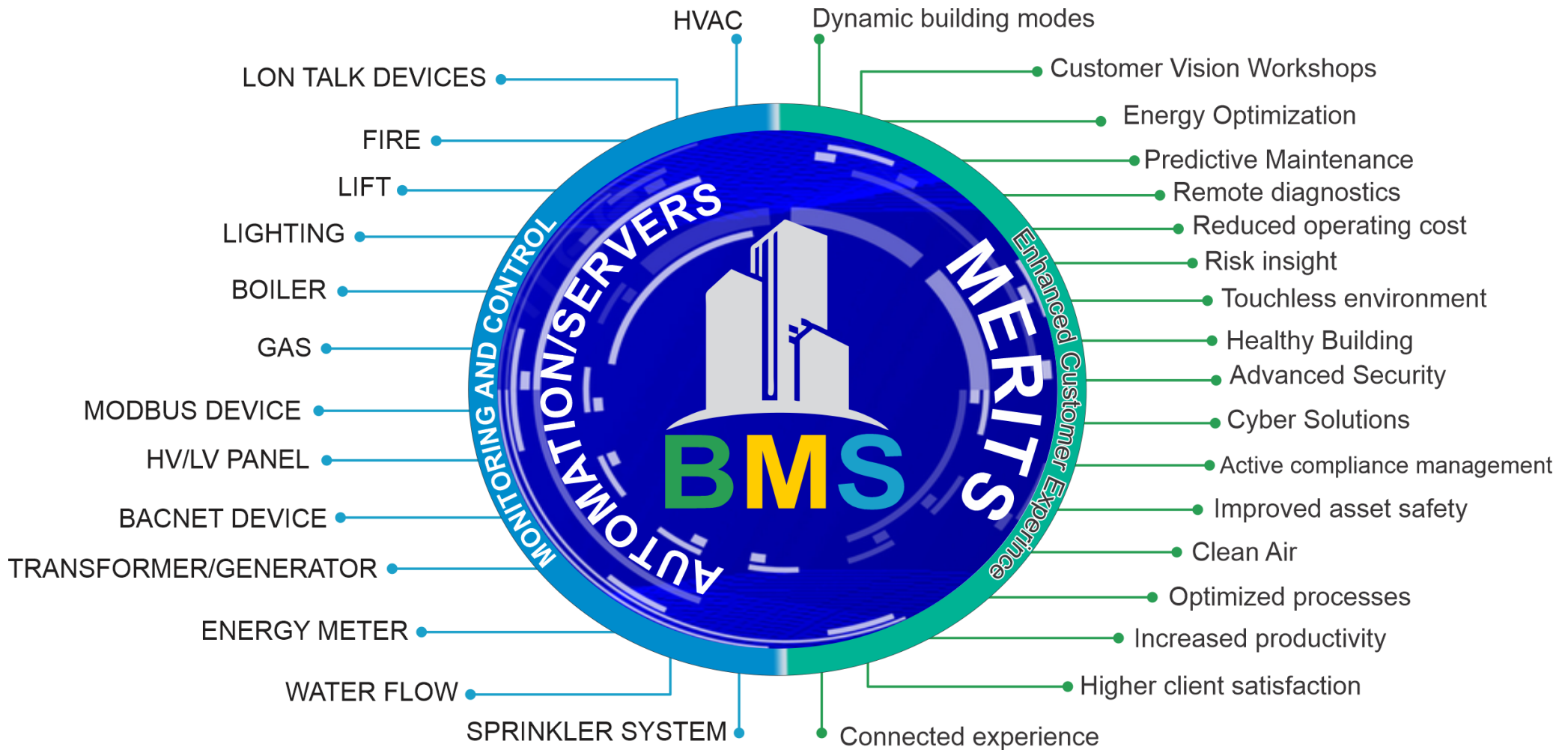


YCF8 PV Series Photovoltaic DC Fuse



Over-Voltage Protector

BUILDING MANAGEMENT SYSTEM



HOSPITALITY-TAILORED ICT SOLUTIONS



Barriers



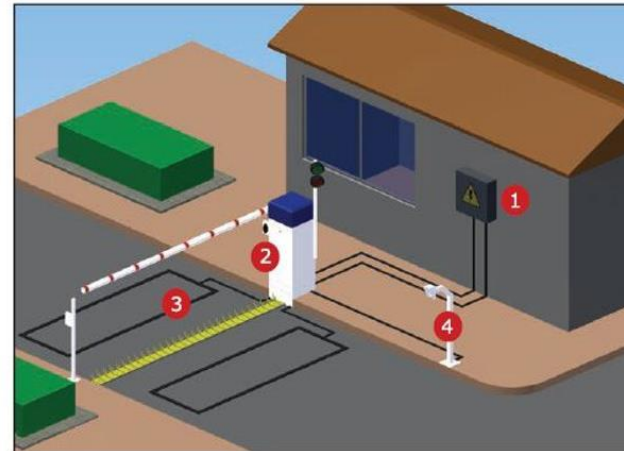
GUARANTEED



MANUFACTURED TO LAST

- 12 month mechanical and electrical guarantee

TYPICAL INSTALLATION OF A TALON BARRIER AUTOMATIC TYRE-SPIKE VEHICLE BARRIER



1. Power and data connections
2. Infrared beam detector
3. Safety / Closing loop in the roadway
4. Car gooseneck with rain cover

Access Control & Intrusion Systems



CCTV Surveillance System



Expanded Storage Capacity from A-Z

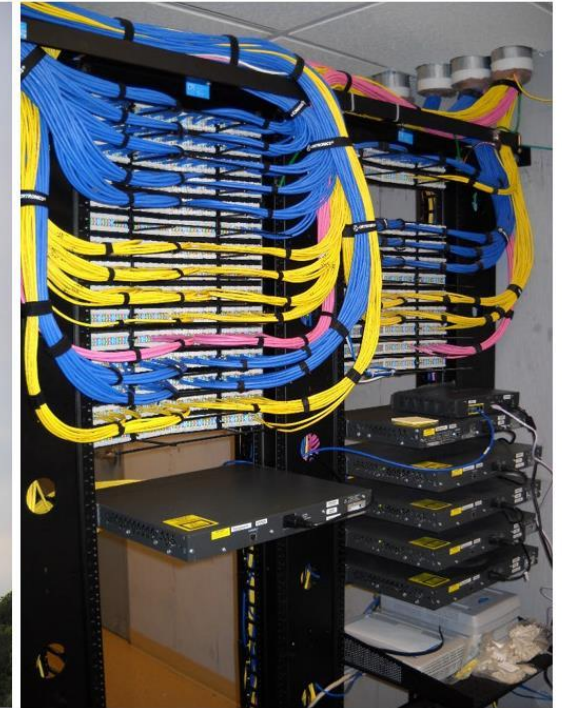


Store or archive more video than ever before, up to double the amount of total capacity.

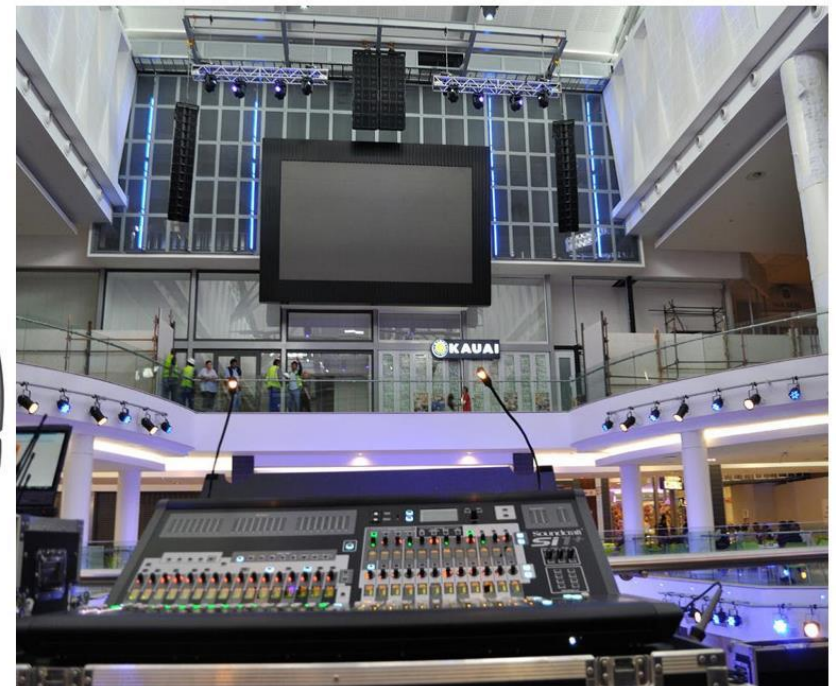
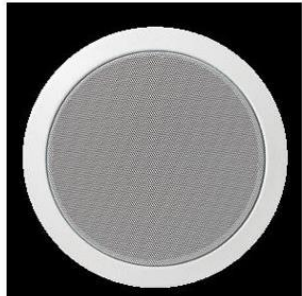
Fire Protection Systems



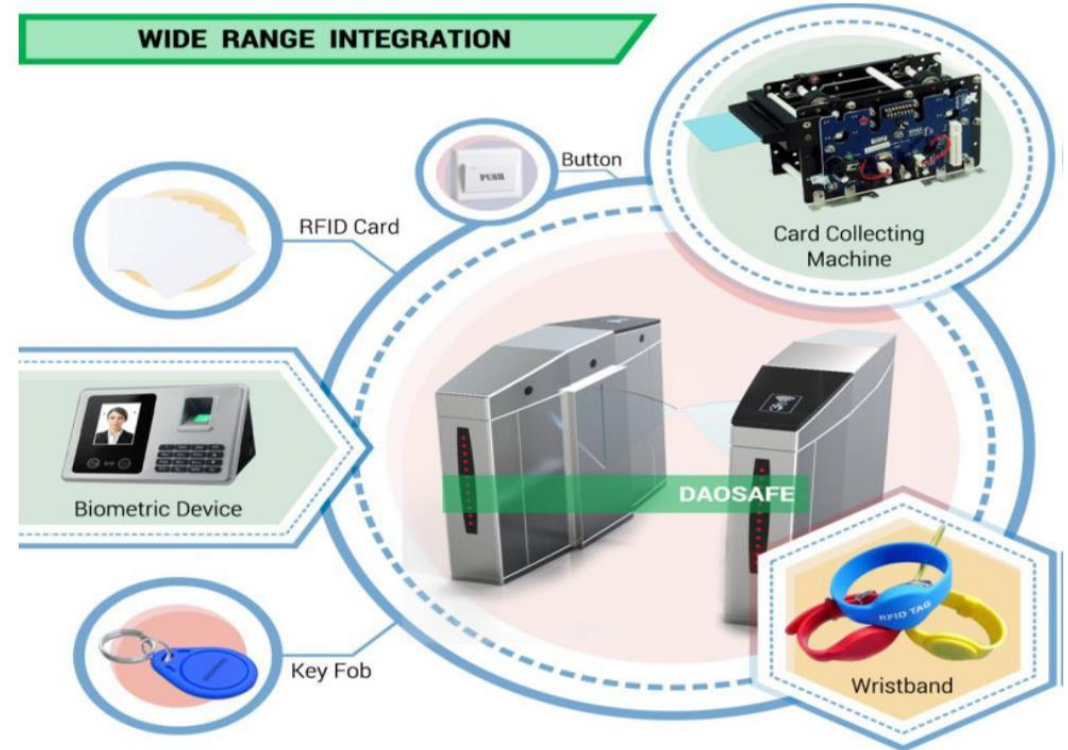
IT and Telecoms Services



PABX Conference 2-Way Radio and Public Address Systems



Turnstiles



X-Ray Imaging and Detection Barriers





Clientele

- UNITED NATIONS
- Religious Worship Centres
- Reddington Multi-Specialist Hospital Group (Including Duchess International Hospital)
- Bouygues Construction Nigeria Limited, Abuja
- Deloitte & Touche (formerly Akintola Williams Deloitte)
- Transocean, Victoria Island Lagos.
- Galaxy Backbone Limited, Wuse 2 Abuja. 3ADB Nigeria Limited, Gwarimpa, Abuja.
- FHI (GHAIN) Nigeria, Area3 Abuja.
- VLISCO Nigeria Limited, Alausa Ikeja, Lagos.
- National Information Technology Development Agency, Area 11, Abuja.
- Shell Nig. Closed Pension Fund Administrator Ltd. (SNCPFA).
- PROVAST Limited (Various Site Locations in LAGOS, Port-Harcourt, Abuja)
- POLARIS BANK LTD
- NCC (and Universal Service Provision Fund, USPF) in Partnership with BCN
- Petroleum Equalization Fund (Management) Board, Abuja (Sub- contractor Under BCN Ltd)
- Usman Danfodio University Sokoto (Sub-contractor Under BCN Ltd)
- Nigeria Liquefied Natural Gas Abuja Head Office.
- Protea Hotel Owerri, Imo State.
- Military Pension Abuja (Partner with Bulwark Ltd)
- Standard Chartered Bank
- Bank of Industry, Abuja.
- Central Bank of Nigeria
- Osun State University
- Nigeria Inter-Bank Settlement System Plc (NIBSS)





Financial Capacity

Derive Communications Systems & Engineering Limited has a strong financial base with a stable working capital and good financial records with our bankers. Derive Communications Systems & Engineering Limited account with these bankers have been satisfactorily operated since inception. Our bankers hold us in high esteem and have continued to express their willingness to extend unlimited credit facilities to Derive Communications Systems & Engineering Limited because of their belief in our abilities and management flexibility.

Our Bankers include:

- Alternative Bank (Sterling Bank), Sterling House, CBD, Abuja, FCT
- Guaranty Trust Bank Plc, ULO Plaza, Zone 5 Abuja.
- Stanbic IBTC Bank Plc, Gwagwalada Branch, FCT.
- Zenith Bank Plc, Algeria Street Branch (Wuse Annex), Zone 3, Abuja
- Wema Bank PLC, Aminu Kano Branch, Wuse 2 Abuja. FCT
- Access Bank PLC, Area 11. Abuja. FCT
- SunTrust Bank Ltd, Wuse 2 Abuja. FCT



Organizational Structure

Our Team

Managing Director/CEO

Salako Oladipupo (COREN Reg., FNATE, CPN Reg, MNCS)

Executive Director

Mrs. Adenike Salako (B.Tech. Biochemistry)

Technical Consultant (Civil Eng & Architecture)

Arch. Samson Ajenifuja

Technical Consultant (Quantity Surveying)

QS. 'Bosede Samuel

Solution Architect/Proj. Engr.

Christall Seun Osungbohun (B.Eng., M.Sc)

HR/Admin Executive

Miss. Janet Temitope Oyelude

Accountant

Tion Williams (Chattered Accountant)

Assistant Project Engineer/Team Lead

Chidi Godswill Chukwulete (B.Eng)

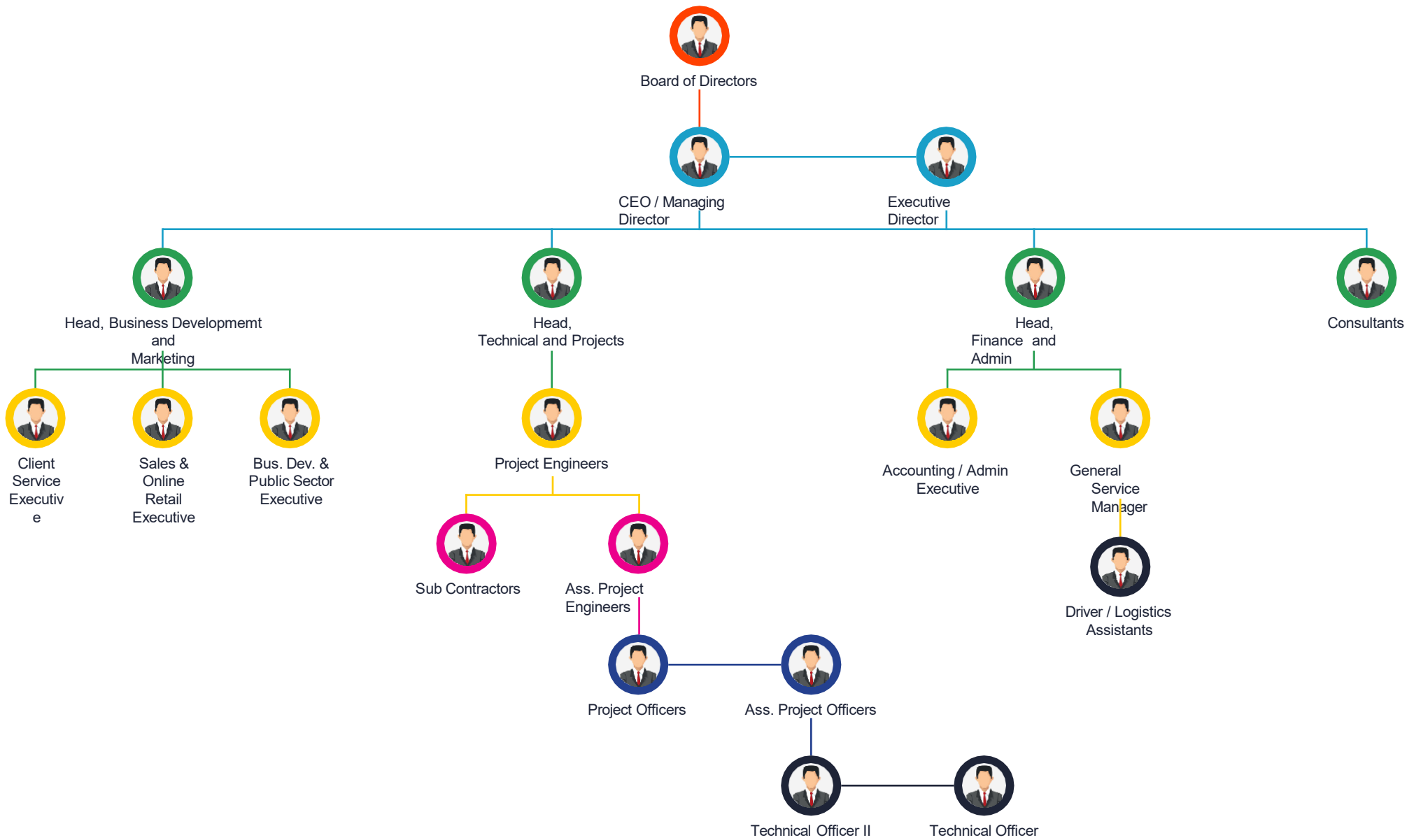
Logistics and General Service Manager

John Igwe Okoro

Senior Business Development & Bid Executive (Team Lead)

Churchill EDUCE

Organizational Structure





Manner of Operation



Our approach offers our clients an easier and more cost successful path to improve quality and long term reliability. Our services can be categorized into three segments as follows:



Advisory

- Consulting
- Site survey
- Treat assessment
- Risk analysis
- Specification
- Systems design



Implementation

- Procurement & supplies
- Installation & commissioning
- Project management
- Preparation of HSE Plan
- Policies operation manuals
- Training procedures



Operation

- On-going support
- Service &
- maintenance Security review

METHODOLOGY

The project cycle begins with the award of the contract by the clients; however, there are some pre-award activities which include the following:

- Visit to site (s) and Survey of premises
- Discussions with client with respect to the project
- Contract negotiations
- Final proposal agreement.

Project cycle will be as follows:

- Project initiation
- Project scheduling
- Project execution
- Project conclusion (commissioning)



Partners & Suppliers

CEM Systems (Tyco)

Global Headquarters 195 Airport Road
West Belfast, BT3 9ED Northern Ireland,
UK.

Dahua Technology Co. LTD

No.1199, Bin'an Road, Binjiang District,
Hangzhou, China.

NORBAIN SD

(Main Distributor of Electronic Security
Equipment) 210 Whafedale
Road, Winnersh Wokingham
Berkshire, London

**TYCO FIRE AND SECURITY PRODUCTS
(JOHNSON CONTROLS INC.)**

(Fire Safety and Security Products) Africa
Office:
Unit 3B, Thandanani office Park, Invicta
Lane,
Halfway Garden x 12 Midrand, South Africa.

HIKVISION**Headquarters**

No.555 Qianmo Road, Binjiang District,
Hangzhou 310051, China

SECURITY SUPPLIES LIMITED

(Access Control, CCTV, Fire Alarm,
Intruder Detection) Units 11 & 12, New
Forest Enterprise Center, Chapel lane
Totton, Southampton, Hants.

ADI GLOBAL, a Resideo Company.

(CCTV, Intruder Detection, Integrated
Systems, Public Address Systems)

EMEA Headquarters

Unit 6, Broadgate, Oldham Broadway
Business Park, Chadderton, Oldham, OL9
9XA

MILESTONE SYSTEMS

(Video Management Solutions and
Technologies)

SECURITY DETECTION

(Metal Detectors and X-Rays Machines) 1164
Worcester Road Framingham, MA 01702.

GuestTek Interactive Entertainment Ltd

First Alberta Place, Suite 600 – 777 8th
Avenue SW, Calgary, Alberta, Canada T2P
3R5

ASSA ABLOY Global Solutions

Förmansvägen 11, 117 43,
Stockholm, Sweden.

Turnstar Systems

(Turnstiles, Boom Barriers, etc.) CC Reg No
1990/011871/2317, 5th Street, Wynberg,
Sandton, 2090, South Africa





Project References

Project References

Clients	Project Description	Location	Status
Backbone Connectivity Network (BCN) Nig Ltd	Civil work and Installation of 229km FIBRE OPTICS CABLE in Kwara and Niger States for BTAIN (USPF) 2013 Projects	Kwara, Niger	Completed
Galaxy Backbone	Contract for IP Surveillance Services	Abuja	Completed
Deloitte & Touche (formerly Akintola Williams Deloitte)	Provision of Inverter System and FM200 Fire Suppression	Abuja	Completed
Bouygues Construction Nigeria Limited	Supply and Installation of Remote-Controlled Electronic Sock Fence	Abuja	Completed
Galaxy Backbone	Contract for IP Surveillance Services Upgrade and High-End Network Video Recorder System at the Galaxy Backbone Plc Head Office	Abuja	Completed
Deloitte & Touche (formerly Akintola Williams Deloitte)	Provision of Inverter System with 200AH Battery Bank for AWD Abuja Office	Abuja	Completed
Central Bank of Nigeria (with BULWARK)	CEMS System by JOHNSON CONTROLS (High End Access Control System) for Various Branches in Nigeria (Preventive and Reactive Maintenance)	Nationwide	Completed
DCK (Digital Communications Konsult Nig LTD)	Provision of Integrated Access Control System with the Ability To Control Access VIA Card and Also The Installation of CCTV and Silent Alarm Panic System Located at Transocean Support Services	Lagos	Completed
PPC LTD	Supply , Install and Commissioning of EXTRA LOW VOLTAGE SOLUTIONS for YABA TRAIN STATION (CCTV, ACCESS CONTROL, SCREENING EQUIPMENT, BOOM BARRIERS, etc)	Lagos	Completed
DCK (Digital Communications Konsult Nig LTD)	Provision of FM200 Fire Suppression at NITDA Abuja Office	Abuja	Completed
Bank Of Industry	Reactivation Of Fire Alarm System at BOI Building Abuja	Abuja	Completed

Project References

Clients	Project Description	Location	Status
PPC Systems Integrator	Provision of Fire Detection & Alarm System For PPC warehouse	Lagos	Completed
Reddington Hospital Groups (Shell Concept is the Consulting Engineer)	Supply, Install and Commissioning Of Extra-Low Voltage Systems Works for DUCHESS SPECIALIST HOSPITAL	Lagos	Completed
Bank Of Industry	Supply and Installation of Inverter System For CCTV Surveillance system at BOI Building Abuja	Abuja	Completed
Bank Of Industry	Supply and Installation of CCTV Surveillance system, Access Control Systems WalkThrough Metal Detector, And Baggage Scanning Machine for BOI Corporate Office Building Abuja	Abuja	Completed
Galaxy Backbone	CCTV Installation In MD Office	Abuja	Completed
Galaxy Backbone	Installation IP Surveillance system and Access Control Systems for BOI Corporate Building Office and HQ	Abuja	Completed
Provast Limited/Shell Nig. Closed Pension Fund Administrator Ltd	Supply, Installation and Configuration of Optical Fibre Cable Connection For Existing CCTV Network in the Estate and Additional Day/Night CCTV Cameras With Existing Network Inside Imani Shell Estate	Abuja	Completed
BCN Nig Ltd(BackBone Connectivity Network)	Supply, Installation and Configuration of Fire Suppression and Protection and Security IP Surveillance & Control System In Usman DanFodiyo University	Sokoto	Completed
Provast Limited/Shell Nig. Closed Pension Fund Administrator Ltd	Provision of Spares for Fire Alarm system for Shell Estate, Second Avenue Ikoyi Lagos	Abuja	Completed
Provast Limited/Shell Nig. Closed Pension Fund Administrator Ltd	Supply and Installation CCTV Surveillance system	Abuja	Completed
Provast Limited/Shell Nig. Closed Pension Fund Administrator Ltd	Provision of Wireless CCTV Surveillance system	Lagos	Completed

Clients	Project Description	Location	Status
PROVAST LIMITED/SHELL NIG. CLOSED PENSION FUND ADMINISTRATOR LTD	SUPPLY AND INSTALLATION OF 16TB NETWORK VIDEO AND REPLACEMENT OF PC AT SECURITY POST	LAGOS	Completed
BCN NIG LTD(BACKBONE CONNECTIVITY NETWORK	IMPLEMENTATION OF STRUCTURED LAN AT PETROLEUM EQUALIZATION FUND (MANAGEMENT) BOARD NEW HEAD OFFICE ABUJA	ABUJA	Completed
PROTEA HOTEL OWERRI (WITH PPC LIMITED)	PURCHASE OF FIRE DETECTION AND ALARM SYSTEMS	OWERRI	Completed
PROVAST LIMITED/SHELL NIG. CLOSED PENSION FUND ADMINISTRATOR LTD	SUPPLY AND INSTALLATION OF ADDITIONAL NETWORK VIDEO RECORDER AND PERIMETER CAMERAS AT THE SHELL3 ESTATE	LAGOS	Completed
DELOITTE & TOUCHE (FORMERLY AKINTOLA WILLIAMS DELOITTE)	SUPPLY OF FM-200 AUTOMATIC FIRE SUPPRESSION SYSTEM FOR THE SERVER ROOM	LAGOS	Completed
PROVAST LIMITED/SHELL NIG. CLOSED PENSION FUND ADMINISTRATOR LTD	SUPPLY AND INSTALLATION CCTV SYSTEM AT STEWARDS QUARTERS	ABUJA	Completed
DELOITTE & TOUCHE (FORMERLY AKINTOLA WILLIAMS DELOITTE)	SUPPLY AND SUPPLY OF ONLINE AND OFFLINE INVERTER SYSTEM FOR ABUJA OFFICE	ABUJA	Completed
BCN NIG LTD	SUPPLY, INSTALLATION AND COMMISSIONING OF THE EQUIPMENT FOR WIRELESS CLOUD IN YOBE STATE UNIVERSITY DAMATURU, NORTH EAST NIGERIA	YOBE	Completed
BCN NIG LTD	SUPPLY, INSTALLATION AND COMMISSIONING OF THE EQUIPMENT FOR WIRELESS CLOUD IN FEDERAL COLLEGE OF EDUCATION, POTISKUM, YOBE STATE NORTH EAST NIGERIA	YOBE	Completed
CENTRAL BANK OF NIGERIA (WITH BULWARK)	BOSCH IP SURVEILLANCE SYSTEM FOR VARIOUS LOCATIONS	LAGOS / ABUJA	Completed
GALAXY BACKBONE	CCTV CAMERA AT THE GBB NOC	ABUJA	Completed

Project References

Clients	Project Description	Location	Status
Provast Limited/Shell Nig. Closed Pension Fund Administrator Ltd	SUPPLY AND INSTALLATION OF GAS DETECTORS IN IMANI-SHELL ESTATE	ABUJA	COMPLETED
Provast Limited/Shell Nig. Closed Pension Fund Administrator Ltd	SUPPLY AND INSTALLATION OF GAS DETECTORS IN MADEIRA AND MADEIRA EXTENSION-SHELL ESTATE	ABUJA	COMPLETED
Provast Limited/Shell Nig. Closed Pension Fund Administrator Ltd	SUPPLY AND INSTALLATION OF ELECTRONIC ACCESS CONTROL SYSTEM AT IMANI EXTENSION RECREATIONAL PARK	ABUJA	COMPLETED
Provast Limited/Shell Nig. Closed Pension Fund Administrator Ltd	SUPPLY AND INSTALLATION OF 3 CAMERAS TO OVER SEE THE PARK IN IMANI-SHELL EXTENSION	ABUJA	COMPLETED
OSUN STATE UNIVERSITY MODUPE AND FOLORUNSO ALAKIJA TEACHING HOSPITAL (UNIOSUN MOFATH)	ELV SERVICES FOR THE HOSPITAL (NURSE CALL, FIRE ALARM, PUBLIC ADDRESS & VOICE EVACUATION ALARM SYSTEM, CCTV, FIRE ALARM INTEGRATION, DATA NETWORKING, WLAN, ETC)	OSUN	COMPLETED
REDDINGTON HOSPITAL GROUP	IP CCTV AND PUBLIC ADDRESS SYSTEM (HQ, IDOWU MARTINS, VICTORIA ISLAND, LAGOS)	LAGOS	COMPLETED
REDDINGTON HOSPITAL GROUP	FIRE ALARM SYSTEM, IP CCTV, PUBLIC ADDRESS SYSTEM, ACCESS CONTROL SYSTEM (LEKKI BRANCH, LAGOS)	LAGOS	COMPLETED
REDDINGTON HOSPITAL GROUP	RESIDENTIAL ELECTRONIC SECURITY SOLUTIONS	LAGOS	COMPLETED
FHI GHAIN (3ADB LTD MAIN CONTRACTOR)	NURSE CALL, PABX FOR IDH HOSPITAL YABA LAGOS	LAGOS	COMPLETED
FHI GHAIN (3ADB LTD MAIN CONTRACTOR)	NURSE CALL, PABX FOR IDH HOSPITAL, KANO	KANO	COMPLETED
FHI GHAIN (3ADB LTD MAIN CONTRACTOR)	ACCESS CONTROL SYSTEM	ABUJA	COMPLETED

Project References

Clients	Project Description	Location	Status
PROVAST LIMITED/SHELL NIG. CLOSED PENSION FUND ADMINISTRATOR LTD	PROVISION OF WIRELESS CCTV SURVEILLANCE SYSTEM (ELELENWO BRISCOE SHELL ESTATE), WALKTHROUGH METAL DETECTOR, ETC	PORTHARCO URT	COMPLETED
NIGERIA INTER-BANK SETTLEMENT SYSTEM PLC (NIBSS)	HIGH END ENTERPRISE BIOMETRIC FACE RECOGNITION ACCESS CONTROL SYSTEM AT HQ, VICTORIA ISLAND	LAGOS	COMPLETED
NIGERIA INTER-BANK SETTLEMENT SYSTEM PLC (NIBSS)	HIGH END ENTERPRISE CCTV SURVEILLANCE SYSTEM WITH AUTOMATIC VEHICLE PLATE RECOGNITION CAMERAS AND TV WALL AT HQ, VICTORIA ISLAND.	LAGOS	COMPLETED
NIGERIA INTER-BANK SETTLEMENT SYSTEM PLC (NIBSS)	HIGH END FINGERPRINT ACCESS CONTROL SYSTEM WITH VISITOR MANAGEMENT AND HR/ACTIVE DIRECTORY INTEGRATION AS WELL AS SMS API INTEGRATION AT HQ, VICTORIA ISLAND	LAGOS	COMPLETED
NIGERIA INTER-BANK SETTLEMENT SYSTEM PLC (NIBSS)	HIGH END ENTERPRISE BIOMETRIC FACE RECOGNITION ACCESS CONTROL SYSTEM AT DANMOLE BRANCH	LAGOS	COMPLETED
NIGERIA INTER-BANK SETTLEMENT SYSTEM PLC (NIBSS)	HIGH END FINGERPRINT ACCESS CONTROL SYSTEM AT DANMOLE BRANCH, VICTORIA ISLAND	LAGOS	COMPLETED
NIGERIA INTER-BANK SETTLEMENT SYSTEM PLC (NIBSS)	HIGH END ENTERPRISE CCTV SURVEILLANCE SYSTEM WITH AUTOMATIC VEHICLE PLATE RECOGNITION CAMERAS AT DANMOLE BRANCH	LAGOS	COMPLETED
NIGERIA INTER-BANK SETTLEMENT SYSTEM PLC (NIBSS)	TWO WAY RADIO WITH VEHICLE BASE AND WALKIE TALKIE WITH 30KM REPEATER STATION AT HQ & DANMOLE BRANCH	LAGOS	COMPLETED
POLARIS BANK LIMITED (BULWARK)	CCTV AND FIRE ALARM IN MULTIPLE LOCATIONS ALL NIGERIA	NATIONWIDE	COMPLETED
PROVAST LIMITED/SHELL NIG. CLOSED PENSION FUND ADMINISTRATOR LTD	UPGRADE OF FIRE DETECTION AND ALARM SYSTEMS IN MADERA EXTENSION SHELL ESTATE, MAITAMA ABUJA	ABUJA	COMPLETED
CENTRAL BANK OF NIGERIA (WITH BULWARK)	DEPLOYMENT OF HIGH END AC2000 ACCESS CONTROL & SECURITY MANAGEMENT SYSTEMS FROM CEM SYSTEM (TYCO/JOHNSON CONTROLS INC.)	NATIONWIDE	COMPLETED

Project References

Clients	Project Description	Location	Status
BULWARK CONSTRUCTION LIMITED	FIRE DETECTION AND ALARM SYSTEM FOR THE MALE HOSTEL AT THE NILE UNIVERSITY OF NIGERIA ABUJA (FIRECLASS BY TYCO/JOHNSON CONTROLS)	Abuja	Completed
CENTRAL BANK OF NIGERIA	20KVA INVERTER SYSTEM FOR THE SECURITY INSTALLATIONS AT THE BRANCHES	Nationwide	Completed
NEW HOPE INTERNATIONAL SCHOOL	SUPPLY AND INSTALLATION OF 66.5KVA SOLAR INVERTER SYSTEM WITH ENERGY STORAGE	Abuja	Completed
VICAK CONCLUTS LTD	DESIGN OF BUILDING MANAGEMENT SYSTEM (BMS) FOR ONGOING GRAND EMERALD HOTEL (RADISSON BLUE) ONIRU LAGOS. Scope Includes BOQ, Schematic Diagram and Workshop Drawings.	Lagos	Completed
LAMBERT ELECTROMECC	REPLACEMENT OF ELV COMPONENTS (LEM MAINTENANCE)	LAGOS	Completed
RADISSON COLLECTION BY EMERALD CONTINENTAL SERVICES LTD	PROVISION OF ELV STRUCTURED CABLING FOR THE PROPOSED RADISSON COLLECTION NIGERIA BY EMERALD GRAND HOTEL BLOCK V, PLOT 5A, ONIRU CHIEFTANCY FAMILY LAYOUT, VICTORIA ISLAND	LAGOS	Ongoing
RADISSON COLLECTION BY EMERALD CONTINENTAL SERVICES LTD	PROVISION OF BUILDING MANAGEMENT SYSTEM (BMS) FOR THE PROPOSED RADISSON COLLECTION NIGERIA BY EMERALD GRAND HOTEL, ONIRU LAGOS	LAGOS	Ongoing
ETHNIC TECHNOLOGIES (PTY) LTD South Africa.	PROVISION OF BACKGROUND MUSIC, EVACUATION SYSTEM AND AUDIO/VISUAL SYSTEMS FOR THE PROPOSED RADISSON COLLECTION NIGERIA BY EMERALD GRAND HOTEL, ONIRU LAGOS	LAGOS	Ongoing
DELOITTE & TOUCHE, NIGERIA	REPLACEMENT OF INVERTER BATTERIES FOR ABUJA OFFICE	ABUJA	Completed
ULTIMUM NIGERIA LIMITED (PART OF KADJI GROUP, CAMEROUN)	EXTRA LOW VOLTAGE SERVICES FOR THE UCB ABA BEVERAGE FACTORY (STRUCTURED CABLING – CAT 6A AND OPTICAL FIBRE INFRASTRUCTURE)	ABIA	Ongoing
NIGERIA DEPOSIT INSURANCE CORPORATION	CISCO IP TELEPHONES FOR THE HEAD OFFICE, ABUJA.	ABUJA	Completed
Derive communicationssystems & engineering Limited.			Company Profile

Project References

Clients	Project Description	Location	Status
ACCESS BANK PLC	LED LARGE SCREEN AND OTHER DISPLAYS FOR THE PROPOSED BRANCH OF THE FUTURE OF ACCESS BANK PLC - (ADEMOLA ADETOKUNBO, ABUJA FCT)	Abuja	ONGOING
ACCESS BANK PLC	LED LARGE SCREEN AND OTHER DISPLAYS FOR THE PROPOSED BRANCH OF THE FUTURE OF ACCESS BANK PLC - (BLOCK 4, PLOT 2, OBAFEMI AWOLowo WAY, ALAUSA IKEJA (C.B.D), LAGOS STATE)	LAGOS	ONGOING
ACCESS BANK PLC	LED LARGE SCREEN AND OTHER DISPLAYS FOR THE PROPOSED BRANCH OF THE FUTURE OF ACCESS BANK PLC - (ONIRU, VICTORIA ISLAND, LAGOS)	LAGOS	ONGOING
ULTIMUM NIGERIA LIMITED (PART OF KADJI GROUP, CAMEROUN)	SUPPLY AND INSTALLATION OF NETWORK SWITCH AND FIREWALL TO THE UCB ABA BEVERAGE FACTORY	ABIA	Ongoing
ULTIMUM NIGERIA LIMITED (PART OF KADJI GROUP, CAMEROUN)	SUPPLY AND INSTALLATION OF NETWORK SURVEILLANCE SYSTEM WITH VIDEO WALL TO THE UCB ABA BEVERAGE FACTORY	ABIA	Ongoing
ACCESS BANK PLC	DESIGN AND COSTING OF 3MW 16.733MWH SOLAR SOLUTION FOR THE PROPOSED ACCESS NATION SCHOOL OF BANKING EXCELLENCE, ACCESS BANK ABEOKUTA, OGUN STATE	OGUN STATE	Completed
BANK OF INDUSTRY	DESIGN AND COSTING OF 1.89MW 12.8MWH SOLAR SOLUTION FOR THE BANK OF INDUSTRY OFFICE, LAGOS (SHELL PETROLEUM DEVELOPMENT COMPANY LOAD)	LAGOS	Completed
BANK OF INDUSTRY	DESIGN AND COSTING OF 630KVA 4MWH SOLAR SOLUTION FOR THE BANK OF INDUSTRY OFFICE, LAGOS (BOI LOAD)	LAGOS	Completed
Derive communicationssystems & engineering Limited.			Company Profile



Contact Us



CONTACT INFORMATION

Abuja Office:

Km 20, Umaru Musa Yar Adua
Expressway,
(Energy House), Lugbe Abuja. FCT.

Lagos Office:

5, Ojulowo Imoshe,
Anifowoshe, Ikeja.
Lagos.

Office Line:

+234 (0) 91 1337 4830

Website:

www.derivecommunications.com

E-mail:

info@derivecommunications.com

info@derivecomms.ng



COMPANY'S DATA

Company Registration Number: VAT Registration Number (TIN):

RC 894941

09508527-0001

NIGERIAN UPSTREAM PETROLEUM REGULATORY COMMISSION (NUPRC)

PERMITS

(MAJOR CATEGORY - Fire & Gas Systems):

NUPRC/OGISP/24/4834125/R369566

(MAJOR CATEGORY - Computer/Data Storage Systems, - Communication Equipment):

NUPRC/OGISP/24/4723262/N389076

(MAJOR CATEGORY - Security and Information Equipment):

NUPRC/OGISP/24/4583482/N389079

(MAJOR CATEGORY - Solar Energy Products - Heating & Cooling Equipment):

NUPRC/OGISP/24/5127366/N389078

(MAJOR CATEGORY - Electrical Installation/Maintenance & Materials):

NUPRC/OGISP/24/7887580/N389080

(MAJOR CATEGORY - Office and Household Appliances):

NUPRC/OGISP/24/8930539/N389082

(MAJOR CATEGORY - CONSULTANCY - Media): NUPRC/OGISP/24/6161082/N393761

(MAJOR CATEGORY - Fire extinguisher supply): NUPRC/OGISP/24/9756073/N389382

(MAJOR CATEGORY - Safety Equipment (PPE)): NUPRC/OGISP/24/5463376/N389378



Derive Communications
Systems & Engineering
Limited

